

Specification

D8140SWW-24V-10mm



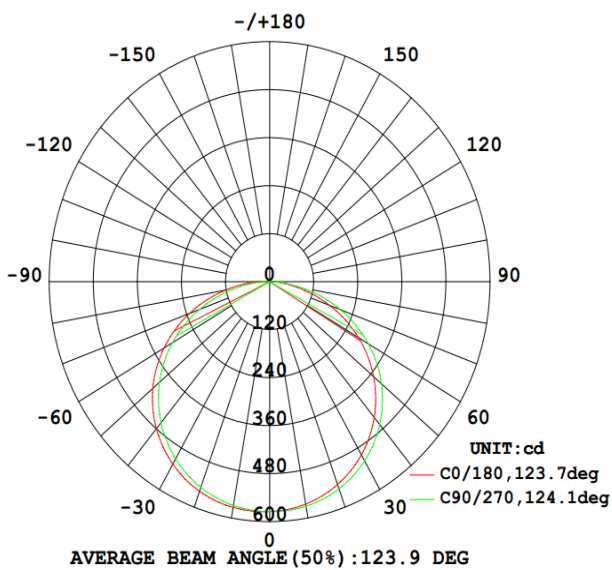
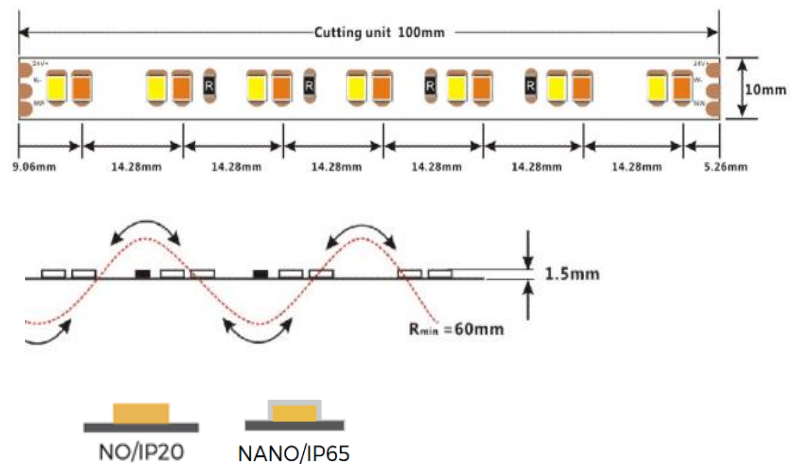
▼ General description

- Three-wire adjustable toning strip makes it widely match all kinds of controllers
- Self-encapsulated design offers six optional 2700-6000K white lights
- With life span over 60000H
- Ta: -25~40°C; Tc: 75°C (max)

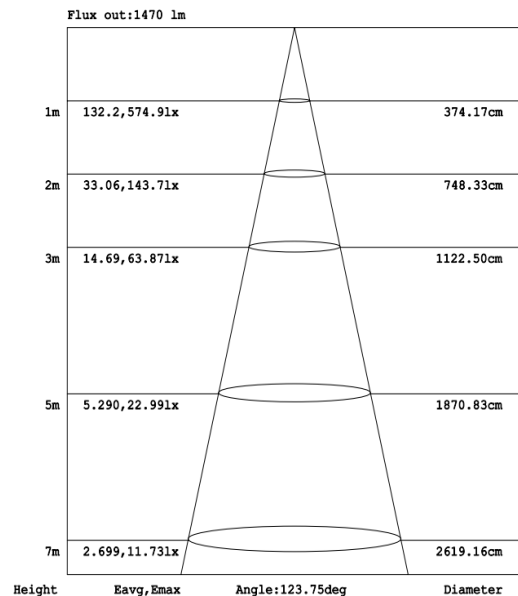


▼ Dimension

- ※ Max.length: 5000mm
- Cutting unit: 14leds/100mm
- LED pitch: 14.28mm
- Min. bend diameter: Φ 60mm
- Mounting: 3M tape
- IP: IP20/IP65
- ※ Warranty: 5years



Photometric of 1M strip


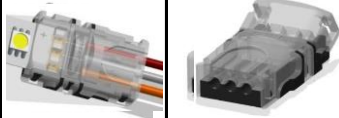
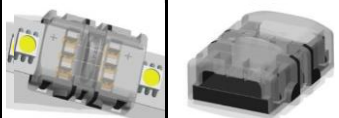


AAI Figure

※ Max.length data is based on 10% voltage drop

※ Warranty is based on indoor use

▼ Accessories Information

Name	Picture	Code	description
CCT set		23-01-00-0005	M2+M4-5A Input voltage: 12-24VDC Maximum loaded current: 5A*4CH Max 20A Maximum loaded power:240W/480W(12V/24V)
Connector for wire and FPC		94-03-00-0041	10mm width, 3PIN connector of wire and FPC, suitable for dual color strip, NO/NA, 3PIN wire 18- 22AWG
Connector for FPC and FPC		94-03-00-0042	10mm width, 3PIN connector of FPC and FPC, suitable for dual color strip, NO/NA

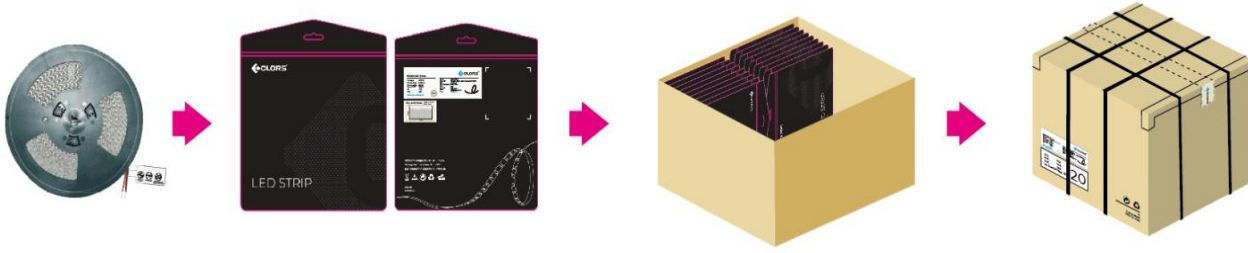
▼ Order Code Formats

1: Category		2: LED		3: LED/m		4: Voltage		5:FPC Width		6: IP Process		7: CRI		8: CCT	
D	-	8	2835	140	140 LED	24	24V	10	10mm	NO	NO	9	>90	SWW 2700-6000K	
										NA	NANO				
D	-	8		140		24		10		NO		9		SWW	
9: Silk Printing		10: Entery cable		11: Wire type		12: Wire length		13: Tape type		14: Label Type		15: Strip Length			
N	Neutral	S	Single	A	red and black cable	012	12cm	W	White 3M	C	COLORS	0500	5m		
C	COLORS	D	Doubel	B	SM-male wire	020	20cm	Y	Yellow 3M	S	Customized	5000	50m		
S	Customized	X	Nothing	C	SM-female wire	050	50cm	X	Nothing			4000	40m		
				X	Nothing	100	100cm								
						0	Nothing								
N		S		A		012		W		C		0500			

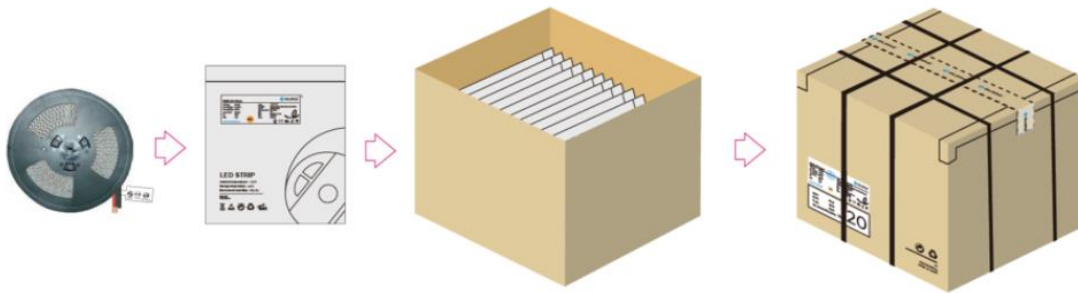
D81402410NO-9SWWNSA012WC0500

▼ Packing

Colors brand package



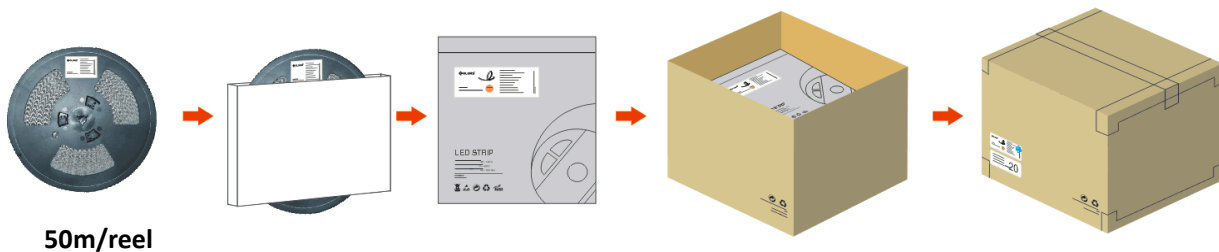
General customized package



IP Process	Product size(mm)	Product quantity (m/reel)	Product quantity (m/case)	Product net weight(kg)	Net weight per box (kg)	Gross weight (kg)	Package size (cm)
NO	5000*10*1.5	5	250	0.152	7.6	8.74	41*41*26
NA	5000*10*1.5	5	250	0.155	7.75	8.913	41*41*26

Remark: data with 10% tolerance

Engineering packaging of NO(IP20)/NA(IP65).



IP Process	Product size(mm)	Product quantity (m/reel)	Product quantity (m/case)	Product net weight(kg)	Net weight per box (kg)	Gross weight (kg)	Package size (cm)
NO	50000*10*1.5	50	500	1.52	15.2	17.48	41*41*26
NA	50000*10*1.5	50	500	1.55	15.5	17.825	41*41*26

Remark: data with 10% tolerance

▼ Precautions

- ※ Please drive the led strip with 24VDC isolated power, and the ripple of the constant voltage source should be less than 5%.
- ※ Please do not bend the strip into an arc with a diameter less than 60mm to ensure the longevity and reliability.
- ※ Do not fold it in case any damage of LED beads.
- ※ Do not pull the power wire hard to ensure the longevity. Any Crash may damage the LED light is prohibited.
- ※ Please make sure the wire is connected to the anode and cathode correctly. The power output should be consistent with the voltage of the strip to avoid damage.
- ※ LED lights should be stored in dry, sealed environment. Please only unpack it before usage. Ambient temperature: -25°C~40°C.Storage temperature: 0°C~60°C.Please use the strips without waterproof within indoor environment with humidity less than 70%.
- ※ Please be careful during operation. Do not touch the AC power supply in case of electric shock.
- ※ Please leave at least 20% power for the power supply during using to ensure there is enough power supply to drive the product.
- ※ Do not use any acid or alkaline adhesives to fix the product (e.g.: glass cement).